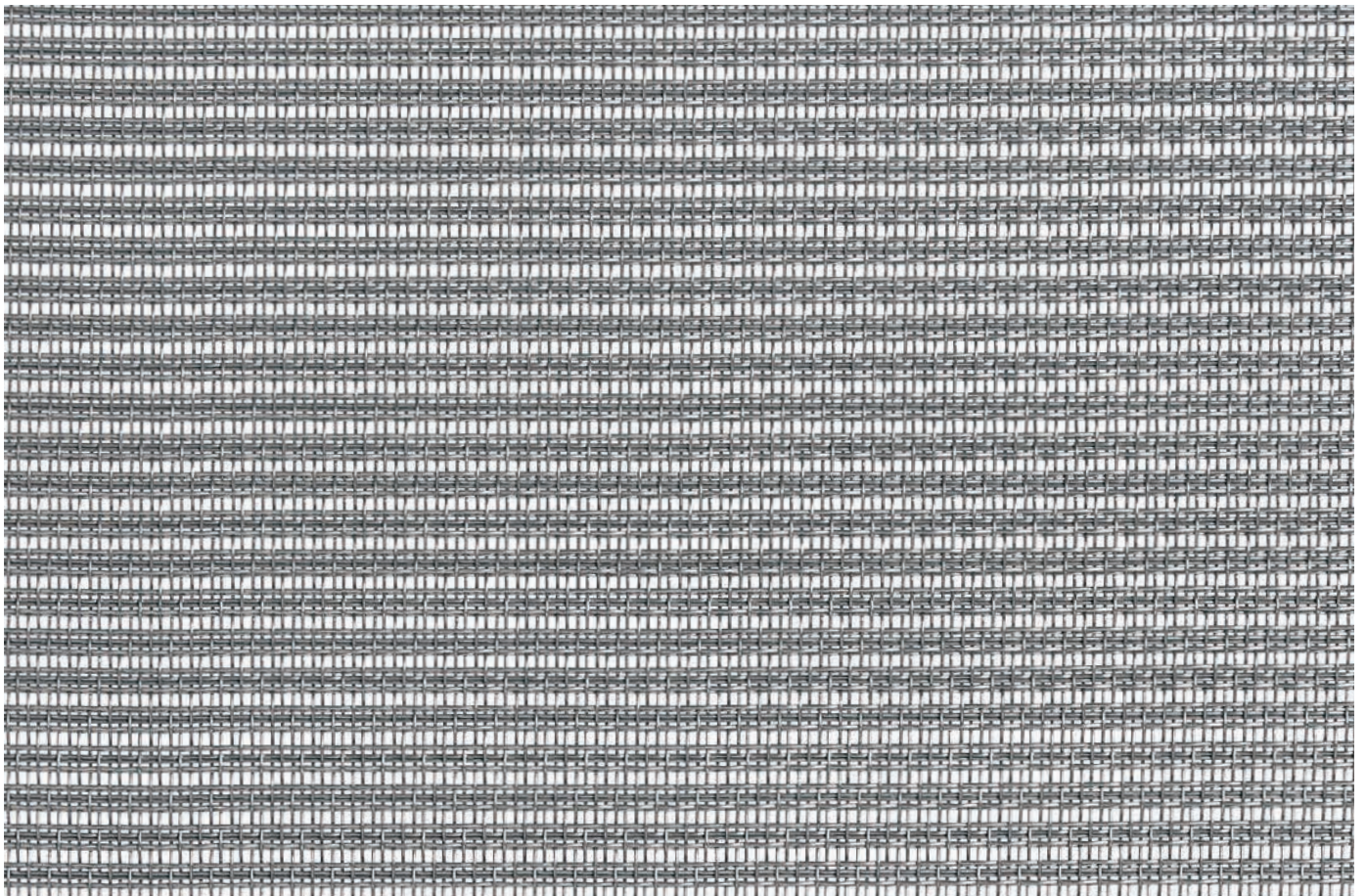




REGIMENTAL



R 12 [1:1]

Dati tecnici - Technical data

| Nome Name | Luce Opening [mm] | Diametro filo Wire diameter [mm] | Spessore finale. Total thickness [mm] | Materiale Material | Peso Weight [Kg/mq] | Vuoto/pieno Open Area [%] | H max Max width [mm] |
|--------------|-------------------------|--|---|-----------------------|---------------------------|---------------------------------|----------------------------|
| R 12 | * | 0,4/0,45 | 1,70 | Aisi 304/316 | 2,95 | 33 | 3000 |
| R 30 | * | 0,50/0,50 | 1,20 | Aisi 304/316 | 3,00 | 10 | 3000 |
| R50 | * | 0,50/0,50 | 1,50 | Aisi 304/316 | 4,20 | 6 | 3000 |

* TESSUTO FILTRANTE - DIM OUT WOVEN CLOTH